

# NURTURING FIBRES

Willow Cardigan  
Eco-Cotton

Needles and Notions  
2 Buttons  
Straight Needles  
3.75mm and 4mm  
Circular Needle  
3.75mm  
Darning Needle  
Stitch Markers

Designs by  
Tracy Schmittgen

KNITTING  
station

# Willow Cardigan

	Small	Medium	Large	X-Large
To Fit Bust / Chest	81-87	92-97	102-107	112-117
At Widest over Bust	87	97	107	117
Full Sleeve Length	55	57	60	64
Full Length	56	59	62	65

Finished measurements are approximate and are based on specified gauge and yarn used.

<b>Yarn Requirements</b>	Small	Medium	Large	X-Large
To fit Bust / Chest	81-87	92-97	102-107	112-117
Amount in Grams	450	500	550	600
Amount in Metres	1200	1300	1480	1590
50gram Skeins	9	10	11	12

Yarn amounts are approximate and are based on average requirements when specified gauge and yarn are used. Amounts may vary for substituted yarns.

<b>Gauge per 10cm<sup>2</sup> / 4 inches on 4mm Needles</b>	<b>Stitches</b>	<b>Rows</b>
Stockinette Stitch:	<b>24</b>	<b>30</b>
<b>Needles and Notions:</b>		
2 Buttons: <a href="http://Buttonmad.com">Buttonmad.com</a> #L96.		
Knitting Needles: 1 pair 4mm for body; 1 pair 3.75mm for bands.		
Circular Dpn Needle: 3.75mm for Neckband.		
Adequate sized Darning Needle		
Stitch markers for Cornflower pattern placements.		

ABBREVIATIONS: General			
<b>Alt:</b> Alternate	<b>Dec:</b> Decrease	<b>P:</b> Purl	<b>RH:</b> Right Hand
<b>B/o:</b> Bind Off		<b>P/u:</b> Pick up	<b>RSF:</b> Right Side Facing
<b>Beg:</b> Begin	<b>Foll:</b> Following	<b>Patt:</b> Pattern	<b>St(s):</b> stitch(es)
<b>Cms:</b> Centimetres	<b>Inc:</b> Increase	<b>P/m:</b> Place Marker	<b>St st:</b> Stocking stitch
<b>C/o:</b> Cast on	<b>K:</b> Knit	<b>Pssso:</b> Pass slip st over	<b>Sl:</b> Slip
<b>Cont:</b> Continue	<b>LH:</b> Left Hand	<b>Rep:</b> Repeat	<b>Tbl:</b> through back of loop
<b>C/f:</b> Centre Front	<b>Ndls:</b> Needles	<b>Req:</b> Required	<b>WSF:</b> Wrong Side Facing
		<b>Ret:</b> Return	<b>Wyif:</b> with yarn in front
<b>Dpn:</b> Double Pointed Needles			<b>Wyib:</b> with yarn in back
<b>K2tog:</b> Knit 2 stitches together		<b>Skpo:</b> Slip1, Knit1, pass slipped stitch over	
<b>Mk1:</b> Make 1 stitch. Pick up loop between next st, knit into the back of st.			
<b>W/e: Work even:</b> Work rows without any shaping			

## CORNFLOWER STITCH PATTERN INSTRUCTIONS

Print out this page 3 and keep it beside you when starting the cornflower pattern. It may appear complicated but in fact it is very easy and a lot of fun. Once mastered it will never be forgotten.

PATTERN: 'Cornflower' Pattern: 6 Rows. 9 plus 5sts.		
<p>Notes:</p> <ul style="list-style-type: none"> <li>• When working on RSF: Slip all stitches purl-wise, wyib (with yarn in back)</li> <li>• When working on WSF: Slip all stitches purl-wise, wyif (with yarn in front)</li> <li>• The centre stitch is defined as the centre of the cornflower pattern placement. It is instructed to place a stitch marker at the centre point of each flower to be made.</li> <li>• Repeat each row instruction for each flower.</li> <li>• This stitch pattern is a Heritage Treasury Stitch Pattern created by unknown persons generations ago.</li> </ul>		
	RSF	Into the centre marked stitch, <u>Mk5</u> as follows: K1, Yo, K1, Yo, K1. (Yo: Yarn Over needle)
Row 2	Row 1	<u>P5</u> wrapping yarn around needle twice, ie: into the 5sts made in previous row.
Row 3	RSF	At 4sts <u>before</u> centre 5 wrapped stitches made in previous row, Sl4 onto RH needle, slip off <u>1<sup>st</sup> wrapped stitch</u> , unwrap, letting it drop, Return the same 4sts back onto LH needle, Pick up dropped stitch, place on LH Needle, K2tog tbl, K3, Slip next <u>3 wrapped stitches</u> , unwrapping, onto RH Needle, Slip off last <u>5<sup>th</sup> wrapped</u> stitch off needle, unwrap, letting it drop, Sl4 onto RH needle, pick up dropped stitch and place on LH Needle, return the same 4sts back onto LH Needle, K3, K2tog.  Note: of the first Mk5 centre sts, you now have 3sts remaining (slipped)
Row 4	WSF	<u>Sl3</u> from previous row.
Row 5	RSF	At 3sts <u>before</u> centre 3 slipped stitches in previous row, Sl3 onto RH needle, slip off <u>1<sup>st</sup> slipped stitch</u> , letting it drop, Return the same 3sts back onto LH needle, Pick up dropped stitch, place on LH Needle, K2tog tbl, K2, Slip next <u>slipped stitch</u> onto RH Needle, Slip <u>last of slipped stitch</u> off needle, letting it drop, Sl3 onto RH needle, pick up dropped stitch and place on LH Needle, return the same 3 sts back onto LH Needle, K2, K2tog. Note: of the remaining last 3 centre unwrapped sts at begin of row, you now have 1 remaining.  Note: of the 3 slipped sts, you now have the 1 original stitch from Row 1 remaining.
Row 6	WSF	Purl remaining <u>last slipped stitch</u> . ie: purl all sts on this row.

# Willow Cardigan

## Notes: Read First.

- Garment is worked flat from the bottom up with side seams.
- The entire garment is made in stockinette stitch (RSF row: knit row / WSF row: purl row)
- Back and Front side seams are gently shaped to slightly nip in at the waist and mirror each other.
- Complete the neckband before attaching the completed sleeves, as there is less bulk to work with.
- The gaps between each Cornflower Pattern differ for each size garment chosen.
- Sizes given in brackets are for the larger sizes, where only one size is given pertains to all sizes.

## Back

Using 4mm Ndl, C/o  
**98[110;122;134]sts.**

Work **10 rows** ribbing as folls:

**1<sup>st</sup> Row: RSF:** (P2, K2) Rep to last 2sts, P2. **2<sup>nd</sup> Row: WSF:** (K2, P2) Rep to last 2sts, K2. Rep 1<sup>st</sup> and 2<sup>nd</sup> rows **5** more times.

Proceed in St st for rem back.

**Next:** Work even: **8** rows.

Set up and Place Markers for centre stitches of Cornflower patterns:

Flowers commence on next row. Place markers next for the centre of each flower as follows on **RSF:** **8** Flowers: Start at beg of row on **8<sup>th</sup> [10<sup>th</sup>, 13<sup>th</sup>;11<sup>th</sup>]** stitch, then every foll **12<sup>th</sup>[13<sup>th</sup>;14<sup>th</sup>;16<sup>th</sup>]** stitch.

**Next 10** rows:

Rows **1–6:** work Cornflower Patt on markers positioned and as per instructions on **page 3** for **6** rows  
Rows **7–10:** Work even.

Side Seam Shaping

**Next Row: RSF:** K1,K2tog, work to last 3sts, K2tog, K1.

**Next 5 Rows:** Work even.

Rep last **6** rows **4** more times.

**10sts** decreased.

**88[100;112;124]sts.**

**Next:** Work even: **8[10;12;14]** rows.

**Next Row: RSF:** K1, Mk1, work to last st, Mk1, K1.

**Next 3 Rows:** Work even.

Rep last **4** rows **9** more times.

**20sts** increased.

**108[120;132;144]sts.**

**Next:** Work even: **2** rows.

Back Armhole Shaping:

**Row 1: RSF:** B/o **5[5;5;6]sts** at beg next **2** rows.

**98[110;122;132]sts.**

**Row 3: RSF:** K2tog, work to last 2sts, K2tog.

**96[108;120;130]sts.**

**Row 4: WSF:** Work even.

Rep Rows **3** and **4:** **6[8;10;12]** more times.

**84[92;100;106]sts.**

**Next:** Work even:**26[28;30;32]** rows / **8.5[9;9.5]10.5cms**

Back Neck:

**Next Row: RSF:**

**K33[36;39;41]sts,** B/o

**18[20;22;24]sts,**

**K33[36;39;41]sts.**

Left Shoulder and neck edge:

**Next Row: WSF:** Work back to neck edge.

**For all sizes:** Over next **10** rows dec a total of **20sts** at neck edge as folls:

**On RSF:**

**Row 1 and 3:** B/o **4sts** at neck edge.

**Row 5:** B/o **3sts** at neck edge.

**Row 7 and 9:** B/o **2sts** at neck edge.

**On WSF:**

**Rows 2, 4, 6, 8 and 10:** P2tog at neck edge.

Put rem **13[16;19;21]sts** onto st holder, or bind off all sts.

Opposite Neck:

With **WSF**, join yarn at neck edge. Rep instructions from Row 1-10 reversing RSF and WSF.

## Right Front Panel.

Note: 1<sup>st</sup> row starts **RSF** at Cf.

Using 4mm Ndl, C/o on

**46[52;58;64]sts.**

Work **10** rows of ribbing as folls:

For Small and Large:

**1<sup>st</sup> Row: RSF:** (K2, P2) Rep to last 2 sts, K2.

For Medium and XLarge:

**1<sup>st</sup> and 2<sup>nd</sup> Rows:** (K2, P2) Rep to row end.

Rep 1<sup>st</sup> and 2<sup>nd</sup> rows **5** more times.

Starting on RSF: Proceed St st for rem front.

**Next:** Work even: **8** rows.

Set up and Place Markers for centre stitches of Cornflower patterns:

Flowers commence on next row.

Place markers next for the centre of each flower as follows on **RSF:**

**3[4;4;4]** Flowers: Starting at Cf,

**9<sup>th</sup> st,** then every foll

**14<sup>th</sup>[12<sup>th</sup>;14<sup>th</sup>;16<sup>th</sup>]**stitch.

**Next 10** rows:

Rows **1–6:** work Cornflower Patt on markers positioned and as per instructions on **Page 3** for **6** rows

rows.

Rows **7–10:** Work even.

Side Seam Shaping

**Next Row: RSF:** Work to last 3sts, K2tog, K1.

**Next 5 Rows:** Work even.

Rep last **6** rows **4** more times.

**5sts** decreased.

**41[47;53;59]sts.**

**Next:** Work even: **8[10;12;14]** rows.

**Next Row: RSF:** Work to last st, Mk1, K1.

**Next 3 Rows:** Work even.

Rep last **4** rows **6** more times.

**7sts** increased.**48[54;60;66]sts**

Front Neck Shaping

Work as follows, at same time cont shaping sides:

**Row 1: RSF:** Starting at Cf, B/o **3sts** at neck, work to last st, Mk1, K1. **46[52;58;64]sts.**

**For all WSF rows:** Work even.

**Row 3: RSF:** B/o **3sts** at neck,

work to row end.

**43[49;55;61]sts.**

**Row 5: RSF:** B/o **3sts** at neck,

work to last st, Mk1, K1.

**41[47;53;59]sts.**

**Row 7: RSF:** B/o **2sts** at neck,

work to row end.

**39[45;51;57]sts.**

**Row 9: RSF:** B/o **2sts** at neck,

work to last st, Mk1, K1.

**38[44;50;56]sts.**

**Next Rows 11, 13: RSF:** Skpo

at neck, work to row end.

# Willow Cardigan

**36[42;48;54]sts.**

## Armhole Shaping

Work as follows, at same time cont neck shaping:

**Row 14: WSF:** B/o **5[5;5;6]**sts at armhole, work back to neck. **31[37;43;48]sts.**

**Row 15: RSF:** Skpo at neck, work to row end.

**30[36;42;47]sts.**

**Row 16: WSF:** P2tog, work back to neck. **29[35;41;46]sts.**

**Row 17: RSF:** Skpo at neck, work to row end.

**28[34;40;45]sts.**

Rep rows **16** and **17:**

**6[8;10;12]** more times.

**16[18;20;21]sts.**

Armhole shaping is now complete. Cont neck shaping as follows:

**Small, Medium and Large only:**

**Next Row: WSF:** Work even.

**Next Row: RSF:** Skpo at neck, work to row end.

Rep last **2** rows **3[2;1;0]**times ending with **13[16;19;21]sts.**

Neckline shaping is now complete. Continue to lengthen armholes now as folls:

**All Sizes:**

**Next:** Work even:**32[36;40;44]** rows to match back armholes.

**Last Row: WSF:** Put rem **13[16;19;21]sts** onto st holder for a 3Ndl B/o or B/o all sts.

## Left Front Panel.

Note: 1<sup>st</sup> row starts **WSF** at Cf. Using **4mm** Ndls, C/o on **46[52;58;64]sts.**

For Small and Large:

**1<sup>st</sup> Row: WSF:** (P2, K2) Rep to last 2 sts, P2. **2<sup>nd</sup> Row: RSF:** (K2, P2) Rep to last 2sts, K2.

For Medium and XLarge:

**1<sup>st</sup> and 2<sup>nd</sup> Rows:** (P2, K2) Rep to row end.

Rep 1<sup>st</sup> and 2<sup>nd</sup> rows **5** more times.

Work 1 more row in rib to return to Cf.

Starting on **RSF:** Proceed in St st for rem front.

**Next:** Work even: **8** rows.

Follow Right Front: Set up and Place Markers for centre stitches of Cornflower patterns.

Next **10** rows:

Rows **1–6:** work Cornflower Patt on markers positioned and as per instructions on **Page 3** for **6** rows  
Rows **7–10:** Work even.

## Side Seam Shaping

**Next Row: RSF:** K1, K2tog, work to row end.

**Next 5 Rows:** Work even.

Rep last **6** rows **4** more times. **5**sts decreased.

**41[47;53;59]sts.**

**Next:** Work even:

**8[10;12;14]rows.**

**Next Row: RSF:** K1, Mk1, K to row end.

**Next 3 Rows:** Work even.

Rep last **4** rows **6** more times.

**7**sts increased. **48[54;60;66]sts**

## Front Neck Shaping

Work as follows, at same time cont shaping sides:

**Row 1: RSF:** Starting at side seam, K1, Mk1, work to row end. **49[55;61;67]sts.**

**Row 2: WSF:** B/o **3**sts at neck, work to row end. **46[52;58;64]sts.**

**Row 3: RSF:** Work even.

**Row 4: WSF:** B/o **3**sts at neck, work to row end. **43[49;55;61]sts.**

**Row 5: RSF:** K1, Mk1, work to row end. **44[50;56;62]sts.**

**Row 6: WSF:** B/o **3**sts at neck, work to row end.

**Row 7: RSF:** Work even.

**Row 8: WSF:** B/o **2**sts at neck, P to row end. **39[45;51;57]sts.**

**Row 9: RSF:** K1, Mk1, K to row end. **40[46;52;58]sts.**

**Row 10: WSF:** B/o **2**sts at neck, work to row end. **38[44;50;56]sts.**

**Row 11: RSF:** Work even.

**Row 12: WSF:** Sl1, P1, Pss0 at neck, work to row end. **37[43;49;55]sts.**

**Row 13: RSF:** Work even.

**Row 14: WSF:** Sl1, P1, Pss0 at neck, work to row end. **36[42;48;54]sts.**

## Armhole Shaping

Work as follows, at same time cont neck shaping:

**Row 15: RSF:** B/o **5[5;5;6]**sts at armhole, work to row end. **31[37;43;48]sts.**

**Row 16: WSF:** Sl1, P1, Pss0, work back to armhole.

**30[36;42;47]sts.**

**Row 17: RSF:** K2tog, work to row end. **29[35;41;46]sts**

**Row 18: WSF:** Sl1, P1, Pss0, work back to armhole.

**28[34;40;45]sts**

Rep rows **17** and **18:**

**6[8;10;12]** more times.

**16[18;20;21]sts.**

Armhole shaping is now complete. Cont neck shaping as follows:

**Small, Medium and Large only:**

**Next Row: RSF:** K2tog, work to row end.

**Next Row: WSF:** Work even.

Rep last **2** rows **3[2;1;0]**times ending with **13[16;19;21]sts.**

Neckline shaping is now complete. Continue to lengthen armholes now as folls:

**All Sizes:**

Next, Work even:

**32[36;40;44]**rows to match back armholes.

**Last Row: RSF:** Put rem **13[16;19;21]sts** onto st holder for a 3Ndl B/o or B/o all sts.

## Sleeve. Make 2.

Using **3.75mm** Ndls, C/o on **50[58;64;72]sts.** Work **12** rows 2x2 (K2, P2) ribbing.

Change to **4mm** Ndls. Proceed in St st for rem of sleeve.

Set up and Place Markers for centre stitches of Cornflower patterns:

Flowers commence on next row. Place markers next for the centre of each flower as follows on RSF:

**3[3;3;5]** Flowers: Start at beg of row, on **12<sup>th</sup> [16<sup>th</sup>; 18<sup>th</sup>; 8<sup>th</sup>]** stitch, then on every foll **14<sup>th</sup>** st.

Next **6** rows:

Rows **1–6:** work Cornflower Patt on markers positioned and as per instructions on **page 3** for **6** rows.

# Willow Cardigan

## Sleeve Shaping

**Next Row: RSF:** K1, Mk1, work to last stitch, Mk1, K1.

**52[60;66;74]**sts.

**Next 5 Rows:** Work even.

Rep last **6** rows, **5** more times.

**62[70;76;84]**sts.

**Next Row: RSF:** K1, Mk1, work to last stitch, Mk1, K1.

**64[72;78;86]**sts.

**Next Row 7 Rows:** Work even.

Rep last **8** rows, **5[5;5;6]** more times.

**74[82;88;98]**sts.

**Next:** Work even:

**16[16;20;16]**rows. Customize sleeve length at this point by inc/dec rows to suit.

**114[114;118;122]**total rows / approx **38[38; 39.5; 41]**cms from wrist to armhole.

## Armhole Shaping

**Row 1: RSF:** B/o **5[5;5;6]**sts at the beg of next **2** rows.

**64[72;78;86]**sts.

**Row 3: RSF:** K2tog, K to last 2sts, K2tog. **62[70;76;84]**sts.

**Row 4: WSF:** Purl.

Rep Rows **3** and **4:** **6[8;10;12]** times.

**50[54;56;60]**sts.

**Next:** Work even: **2** rows.

**Next Row: RSF:** K2tog, K to last 2sts, K2tog. **48[52;54;58]**sts.

**Next 3 Rows:** Work even.

Rep last **4** rows once more.

**46[50;52;56]**sts.

## Sleeve Head

**Next Row: RSF:** Skpo, K2tog, K to row end. **44[48;50;54]**sts.

**Next Row: WSF:** Sl1, P1, pssso, P2tog, P to row end.

**42[46;48;52]**sts.

Rep last **2** rows until **18**sts rem.

B/o to last 2sts, K2tog, pull yarn through to end off.

## **Neckline.**

Notes: Read all instructions about Neckline carefully before starting.

- See Make Up instructions on closing shoulder seams and blocking before starting the neckline.

- Neckline to be worked first, work C/f bands after neckline is completed.

- Cornflower Pattern begins immediately when picking up the stitches.

- Spaces differ between some flowers to accommodate neckline shaping.

- Pick up sts by inserting needle closely through the very edge of neck bind off sts.

- Importantly, on RSF, prepare placement for each flower with markers for the centre of each flower on back and front panels as directed.

Moving flowers a little bit along from original markers is perfectly fine as you pick up sts and start.

- Keep fronts matching.

## Front Neck Flowers Placement:

Place markers for **5** flowers in this order per each front panel.

**1<sup>st</sup> flower:** approx 2-3cms away from C/f edge,

**5<sup>th</sup> flower:** approx 2-3cms away from the shoulder seam,

**4<sup>th</sup> flower:** approx 6-7cms away from 5<sup>th</sup> flower.

**3<sup>rd</sup> flower:** approx 6-7cms away from 4<sup>th</sup> flower.

**2<sup>nd</sup> flower:** divide up the rem space left between 1<sup>st</sup> and 3<sup>rd</sup> flowers for 2<sup>nd</sup> flower placement.

## Back Neck Flowers Placement:

**4** flowers. Find centre back of neckline, place markers approx 3-4cms on either side for the middle 2 flowers, then mark the last 2 flowers 6-8cms away from these.

## **Start Neckline Here:**

**Row 1: RSF:** Using a **3.75**mm Circular Ndl, Right Front panel, P/u sts as folls, at same time start Row 1 of the Cornflower pattern at each marker. P/u approx **70[74;78;82]**sts from C/f edge to the first shoulder, then P/u approx **60[62;64;66]**sts on back neckline between both shoulder points, then

P/u approx **70[74;78;82]**sts on rem front neck.

Total stitches: **200[210;220;230]**sts.

Note: Front Flowers: Spaces differ between some flowers due to decreased neck shaping so as not to run out of space between the flowers for the decreases,

Make sure front flowers are:

*No less than **16[16;17;18]**sts between 1<sup>st</sup>, 2<sup>nd</sup> and 3<sup>rd</sup> flowers,*

*No less than **14[15;16;16]**sts between 3<sup>rd</sup> and 4<sup>th</sup> flowers, and*

*No less than **13[14;15;16]**sts between 4<sup>th</sup> and 5<sup>th</sup> flowers when picking up stitches.*

Back Flowers: Note: Make sure back flowers are *no less than*

**15**sts apart when picking up stitches and evenly spaced.

**Row 2: WSF:** Purl Row. Proceed with Row 2, at same time **dec1, 2sts away from both sides** of centre of each 1<sup>st</sup>, 2<sup>nd</sup> and 3<sup>rd</sup> flowers at fronts, also **dec1** at each shoulder point. **14sts** decreased.

Note: Decreasing close to flowers will hide the decreases under the 'petal' stitches. *Make sure not to include the 'petal' sts into the decreases, ie: the sts that are being dropped.*

**Row 3: RSF:** Proceed with Row 3 of Cornflower Patt.

**Row 4: WSF:** Purl Row. Proceed with Row 4, at same time **dec1, 1st away from both sides**

of centre of each 1<sup>st</sup>, 2<sup>nd</sup> and 3<sup>rd</sup> flowers at fronts, also **dec1** at each shoulder point. **14sts** decreased.

**Row 5: RSF:** Proceed with Row 5 of Cornflower Patt.

**Row 6: WSF:** Purl Row. Proceed with Row 6, at same time **dec1** at each shoulder points. **2sts** decreased. Total of **30sts** decreased.

Note: Check your stitch count on Row 6, in order to start and finish off RSF ribbing with K2. This will require sets of **4sts + 2sts**. Adjust sts if req to **170[182;190;202]**sts.

**Row 7: RSF:** Change to ribbing pattern and **Change down Ndl size to 3.5mm:** starting with (K2, P2) rep to last **2**sts, K2.

# Willow Cardigan

**Row 8: WSF:** (P2, K2) rep to last 2sts, P2.

Rep last 2 rows working back and forth for a total of 12 rows ribbing.

Bind off Row:

Bind off all sts RSF, rib-wise; decreasing stitches on bind off as follows:

Starting and ending at Cf; (K2, P2tog) 5 times closest to centre fronts to hold and complete the curve, at centre back: P2tog the purl stitches between the 2 centre flowers. This will ensure that the neck will never stretch.

## Centre Front Bands.

Left Side Band: Using 3.75mm Ndl, P/up approx

94[98;102;106]sts evenly along RSF Cf edge.

**Row 1: RSF:** (K2, P2) rep to last 2sts, K2. **Row 2: WSF:** (P2, K2) rep to last 2sts, P2.

Rep Rows 1 & 2, 5 more times.

Total rows: 12rows.

Bind off rib-wise all sts.

Right Side Band. Work as per Left Side band, at same time make buttonholes according to the size of chosen buttons.

Buttonholes are worked by casting off sts on row 5, adding sts back on on Row 6.

Start buttonholes on 4<sup>th</sup> stitch and depending on button size, start 2<sup>nd</sup> buttonhole on 12<sup>th</sup> stitch.

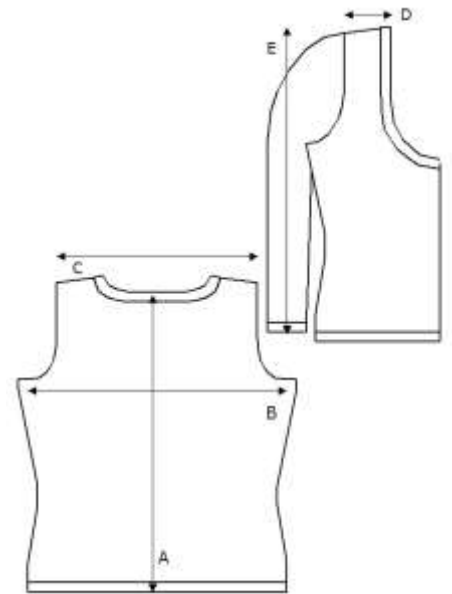
Tip: Pick up 1st for every row over bands. On body pick up 6sts per 6 rows, then omit 1 row. Repeat.

## Make Up Instructions.

1. Block fronts and back before closing shoulders
2. Close shoulder seams with a 3 Ndl bind off or close with a small seam.
4. Work neckline finish.
5. Work C/f bands.
6. Block finished neckline.
7. Close body side seams.
8. Block sleeves then close sleeve side seams.
9. Tack under-arm sleeve armhole points to body under-arm armhole points, rep with centre of sleeve head to match shoulder seam. Finish seaming in both sleeves.

## Care Instructions.

Always use the care instructions found on the yarn label at all times. Never store your cardigan on a hanger. All handmade garments need to be store flat on a shelf.



View full schematics on [knittingstation.com](http://knittingstation.com)



View a selection of handmade buttons on [www.buttonmad.com](http://www.buttonmad.com)



Tip: When positioning markers for front neck flower placements, check the positions by placing the two panels together and then adjust if needs be. More pattern help can be found on [knittingstation.com](http://knittingstation.com).

Sample on cover page was made in colour Willow.