

NURTURING FIBRES

Impressions of Spring Square



Colour used: Eco-Lush in Mist, Anvil, Blush & Vanilla
Designed by Caitie Moore for Nurturing Fibres

NURTURING FIBRES

PATTERN DIFFICULTY

Intermediate

MEASUREMENTS

Completed measurements:
15cm x 15cm square

MATERIALS

Small quantities of *Nurturing Fibres Eco-Lush (50g/200m)* in as many colours as preferred
Hook: 2.75mm
Tapestry Needle
Scissors

ABBREVIATIONS

blo-hdc: back loop only hdc
bpdc: back post dc
ch: chain
ch-sp: chain space
dc: double crochet
hdc: half double crochet
mr: magic ring
sc: single crochet
sk: skip
slst: slip stitch
st(s): stitch(es)

IMPORTANT! PATTERN NOTES

- Pattern is written with US terminology.
- If changing colors between rounds, use a standing stitch instead of the chains to start the round.
- Use the invisible join to close the round.

SPECIAL STITCHES

Popcorn stitch

There are 2 types of popcorn stitch worked in this pattern. The first (named "Popcorn" in this pattern) is worked as follows:

Work 5 dc into the same stitch. Remove your hook from the last dc and insert it, from front to back, into the top of the first dc of the popcorn stitch. Insert hook into the loop from the last dc and pull it through to make the popcorn stitch puff.

The second type of popcorn is used only in the last round (named "3-dc popcorn" in this pattern). It is worked in the same way as the first popcorn stitch but with only 3 dc.

3rd loop sc

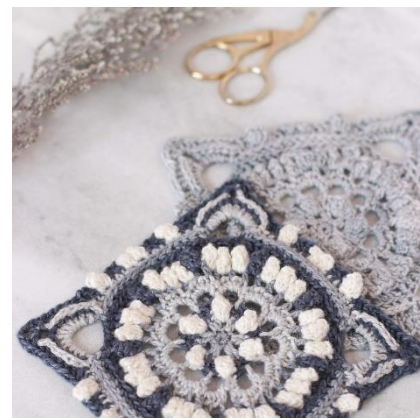
For this stitch, the sc is worked into the 3rd loop of the hdc (located behind and just below the back loop) from the previous round. To find the 3rd loop, tilt your work slightly towards you.

Back loop hdc

For this stitch, the hdc is worked in the back loop only

Back Post Double Crochet

This stitch is worked around the post of the stitch rather than into the top of the stitch. Yarn over, insert your hook from the back of your work to the front, around the post. Continue with a regular double crochet



INSTRUCTIONS

Round 1: Mr 6 sc, slst to close (6)

Round 2: ch 2 (counts as first hdc), hdc in same st, ch 1, (2 hdc + ch 1) in each st around, slst into 2nd ch of initial ch 2 to close round (12 hdc, 6 ch)

Round 3: Slst into next ch-1-sp, ch 3 (counts as 1st dc of 5-dc-popcorn st) *popcorn st into ch-1-sp, ch 1, sk 1, 2 dc into the next hdc*. Repeat from * around. Slst into back of 1st popcorn to close round (6 popcorns, 6 ch, 12 dc)

Round 4: *ch 5, slst between the next 2 dc, ch 5 and slst into the back of the popcorn st*. Repeat from * around and slst into base of first ch-5-sp to close (12 ch-5-sp)

Round 5: Slst into next ch-5-sp. (6 sc, slst) into each ch-5-sp around. Slst into next sc to close rnd (72 sc, 14 slst, 12 petals)

Round 6: Slst into next sc. ch 3 *(counts as hdc + ch 1), sk 1, hdc, ch 1, sk 1, hdc, ch 1, sk the

NURTURING FIBRES

next 2 sts and hdc into 2nd sc of the next petal. Repeat from * around. Slst into 2nd ch of initial ch 3 to close. (72 hdc, 36 ch)

Round 7: Slst into next ch-sp. *popcorn st into the ch-sp, ch 1. Repeat from * around, into each ch-sp. (36 popcorns, 36 ch)

Round 8: ch 3 (counts as a dc), dc into each popcorn and each ch st around. Slst into 3rd ch of initial ch 3. (72)

In this round you will add the corners.

Round 9: *ch 8, sk 2, sc in next st, blo-hdc in next 14 st, slst into next st* repeat from * 3 more times. Slst into base of initial ch 8 to close (4 ch 8, 4 sc, 56 blo-hdc)

Round 10: slst into ch-8-sp. *Into ch-8-sp, work the following [ch 3 (counts as dc), 5 dc, ch 4, 6 dc], hdc in the next st, 3rd loop sc in the next 14 st. Repeat from * around. Slst into 3rd ch of initial ch 3 to

close (48 dc, 4 ch-4-sp, 4 hdc, 56 sc)

Round 11: *ch 3 (counts as 1st bpd), bpd in the next 5 st, work the corner into the ch-4-sp as follows [2 dc, ch 2, 2 dc], bpd into the next 6 st, sk 1, dc in the next 2 st, popcorn st, ch 1, dc in the next 3 st, 3-dc popcorn, ch 1, dc in the next 3 st, popcorn, ch 1, dc in next 2 st, sk 1. Repeat from * around. Invisible join to close round (48 bpd, 8 ch, 8 popcorns, 8 3-dc-popcorn, 56 dc)

FINISH UP



Weave in all loose ends.

ABOUT THE YARNS

Eco-Lush is a uniquely spun yarn with 200 meters to a ball. It is 40% bamboo and 60% cotton and is lovingly hand-dyed in South Africa.

Stockists of our yarn are listed on our webpage www.nurturingfibres.com

COPYRIGHT RESTRICTIONS

Digital & print publication rights reserved by Nurturing Fibres.

All other Intellectual property rights by Nurturing Fibres.

This pattern is for personal use only. Commercial use is strictly prohibited.