

NURTURING FIBRES

Boho Tunic



Colour used: Eco-Cotton in Cobblestone, Charcoal, Ruby Pink, Watershed, Lavender, Sweet Pea, Pear

Designed by Brenda Grobler for Nurturing Fibres

NURTURING FIBRES

PATTERN DIFFICULTY

Intermediate

MEASUREMENTS

Pattern Sizes:

The pattern is written for size 34 (87cm) but includes full instructions how to adjust for bigger sizes. For larger sizes, remember to buy more yarn in the main colour.

Approximately 1 ball extra per size should be enough.

Completed measurements:

34"/87 cm bust

Length to shoulder:

80cm

Sleeve length:

31cm

MATERIALS

Nurturing Fibres Eco-Cotton (50g/125m)

9x Cobblestone

1x Charcoal

1x Ruby Pink

1x Watershed

1x Lavender

1x Sweet Pea

1x Pear

Hook: 4.00mm

Tapestry Needle

Scissors

ABBREVIATIONS

2trtog – two trebles together (dec)

beg - beginning

chs – chain/s

ch – chsp

cont - continue

dc – double crochet

dec – decrease

htr – half treble

rep – repeat

R/WS – right/wrong side

sk - skip

slst – slip stitch

sts – stitch/es

tr – treble

GAUGE

14sts x 10 rows = 10x10cm
when worked in tr's with a
4.00mm hook

IMPORTANT! PATTERN NOTES

- Ch3 replaces the first treble and count as a stitch. (For a completely flawless stitch, try using a standing twist tr to begin rounds, tutorials are available on the internet)
- The post of the stitch refers to the actual body of the stitch.
- Pattern is written in UK terminology.
- The pattern is worked top down.
- The yoke is completed first. For bigger sizes, work approx. 1 more round (per size) on the yoke before joining for the body. For best results, try the yoke on before continuing work on the body.
- The body has regular increases. To ensure a perfect fit, try the tunic on at regular intervals and then either work fewer straight rounds between increase rounds (for eg 4 straight rounds, instead of 5 as stipulated in the pattern); for larger hips, or more (for eg 6 straight rounds, instead of 5 as stipulated in the pattern); for smaller hips.



INSTRUCTIONS

With a 4.00mm hook, and Eco-Cotton Cobblestone, make 90ch, join in the round with a slst, but be careful not to twist the ch.

Round 1: (RS) Ch3, 1tr in the next 18 chs, ch1, 1tr in the next 26 chs, ch1, 1tr in the next 19 chs, ch1, 1tr in the next 26 chs, close with a dc in the 3rd ch, turn. *(To close, insert hook in the 3rd ch of the starting tr, make a dc as per normal. This will replace the ch1 of the other 3 corners)* (90 sts, 4 1chsp corners)

Round 2: Ch3, 1tr in each st to the next 1chsp, *(1tr, ch1, 1tr) in the next 1chsp, 1tr in each st to the next 1chsp*, rep from * all around, 1tr in the beg 1chsp, close with a dc in the 3rd ch, turn. (98 sts, 4 1chsp corners)

Round 3 – 15: Rep prev round. (202 sts, 4 1chsp corners)

Work more rounds for larger sizes, but keep in mind that a further 3chs will be added for each armhole. When working more rounds, keep in mind that the longer sides are the body, the shorter sides are the sleeves.

NURTURING FIBRES

BODY



Round 16: Ch3, 1tr in each st across to next 1chsp, 1tr in the 1chsp, ch3, sk all the sts to the next 1chsp, and work 1tr in the 1chsp, 1tr in each st to the next 1chsp, 1tr in the next 1chsp, ch3, sk all the last unworked sts to the beg 3ch, close with a slst in the 3rd ch, turn. (112tr's, 2x3ch)

Round 17: Slst to the second ch, ch3, 1tr in the next ch, 1tr in each st across to the next ch3, 1tr in each ch, 1tr in each st across, 1tr in next ch, close with a slst in the 3rd ch, turn. (118tr)

Round 18 – 21: Ch3, 1tr in each st around, close with a slst in the 3rd ch, turn.

Round 22: Ch3, 1tr in the next 12 sts, 2tr in the next st, 1tr in the next 30 sts, 2tr in the next st, 1tr in the next 27 sts, 2tr in the next st, 1tr in the next 30 sts, 2tr in the next st, 1tr in the next 14 sts, close with a slst in the 3rd ch, turn. (122 sts)

Round 23 – 27: Ch3, 1tr in each tr all around, close with a slst in the 3rd ch, turn.

Round 28: Ch3, 1tr in the next 12 sts, 2tr in the next st, 1tr in the next 32 sts, 2tr in the next

st, 1tr in the next 27 sts, 2tr in the next st, 1tr in the next 32 sts, 2tr in the next st, 1tr in the next 14 sts, close with a slst in the 3rd ch, turn. (126 sts)

Round 29 – 33: Ch3, 1tr in each tr all around, close with a slst in the 3rd ch, turn.

Round 34: Ch3, 1tr in the next 12 sts, 2tr in the next st, 1tr in the next 34 sts, 2tr in the next st, 1tr in the next 27 sts, 2tr in the next st, 1tr in the next 34 sts, 2tr in the next st, 1tr in the next 14 sts, close with a slst in the 3rd ch, turn. (130 sts)

Round 35 – 39: Ch3, 1tr in each tr all around, close with a slst in the 3rd ch, turn.

Round 40: Ch3, 1tr in the next 12 sts, 2tr in the next st, 1tr in the next 36 sts, 2tr in the next st, 1tr in the next 27 sts, 2tr in the next st, 1tr in the next 36 sts, 2tr in the next st, 1tr in the next 14 sts, close with a slst in the 3rd ch, turn. (134 sts)

Round 41 – 45: Ch3, 1tr in each tr all around, close with a slst in the 3rd ch, turn.

Round 46: Ch3, 1tr in the next 12 sts, 2tr in the next st, 1tr in the next 38 sts, 2tr in the next st, 1tr in the next 27 sts, 2tr in the next st, 1tr in the next 38 sts, 2tr in the next st, 1tr in the next 14 sts, close with a slst in the 3rd ch, turn. (138 sts)

Round 47 – 51: Ch3, 1tr in each tr all around, close with a slst in the 3rd ch, turn.

Round 52: Ch3, 1tr in the next 12 sts, 2tr in the next st, 1tr in the next 40 sts, 2tr in the next st, 1tr in the next 27 sts, 2tr in the next st, 1tr in the next 40

sts, 2tr in the next st, 1tr in the next 14 sts, close with a slst in the 3rd ch, turn. (142 sts)

Round 53 – 57: Ch3, 1tr in each tr all around, close with a slst in the 3rd ch, turn.

Round 58: Ch3, 1tr in the next 12 sts, 2tr in the next st, 1tr in the next 42 sts, 2tr in the next st, 1tr in the next 27 sts, 2tr in the next st, 1tr in the next 42 sts, 2tr in the next st, 1tr in the next 14 sts, close with a slst in the 3rd ch, turn. (146 sts)

Round 59 – 63: Ch3, 1tr in each tr all around, close with a slst in the 3rd ch, turn and fasten off.

BORDER



Round 1: Join Charcoal in the first st, ch1, work 1htr in each st around, close with a slst in the first htr and fasten off.

The following rounds will all be worked in htr's, but work every htr BETWEEN the stitches of the prev round. Close with a slst in the first htr, and fasten off after each round. Rejoin new colour between two stitches. Turn after each round.

NURTURING FIBRES

Round 2: Use Ruby Pink.
Round 3: Use Watershed.
Round 4: Use Lavender.
Round 5: Use Sweet Pea.
Round 6: Use Pear.
Round 7: Use Ruby Pink.
Round 8: Use Watershed.
Round 9: Use Lavender.
Round 10: Use Sweet Pea.
Round 11: Use Pear.

SLEEVES

(For bigger sizes, work the sleeves exactly as given here, the only difference will be stitch count)

With Cobblestone and a 4.00mm hook join yarn in the middle (2nd ch) of the armhole. *(The 3ch's made in round 16)*

Round 1: Ch3, 1tr in the next ch, 1tr around the post of the next tr, 1tr in each st all around to next 1chsp, 1tr around the post of the next tr, 1tr in the next ch, turn. (52 sts)

Round 2 – 4: Ch3, 1tr in each st around, close with a slst in the 3rd ch, turn.

Round 5: Ch3, 2trtog over the next 2 sts, work 1tr in each st to last 3 sts, 2trtog over the next 2 sts, 1tr in the last st, close with a slst in the 3rd, turn. (50 sts)

Round 6 – 8: Ch3, 1tr in each st around, close with a slst in the 3rd ch, turn.

Round 9: Rep round 5. (48 sts)

Round 10 – 12: Ch3, 1tr in each st around, close with a slst in the 3rd ch, turn.

Round 13: Rep round 5. (46 sts)

Round 14 – 16: Ch3, 1tr in each st around, close with a slst in the 3rd ch, turn.

Round 17: Rep round 5. (44 sts)

Round 18 – 20: Ch3, 1tr in each st around, close with a slst in the 3rd ch, turn.

Round 21: Rep round 5. (42 sts)

Round 22 – 26: Ch3, 1tr in each st around, close with a slst in the 3rd ch, turn and fasten off. Rep for second sleeve.

BORDERS

Round 1: Join Charcoal in the first st, ch1, work 1dc in each st around, close with a slst in the first dc and fasten off.

The following rounds will all be worked in dc's. Close with a slst in the first dc, and fasten off after each round. Rejoin new colour between two stitches. Turn after each round.

Round 2: Use Ruby Pink.

Round 3: Use Watershed.

Round 4: Use Lavender.

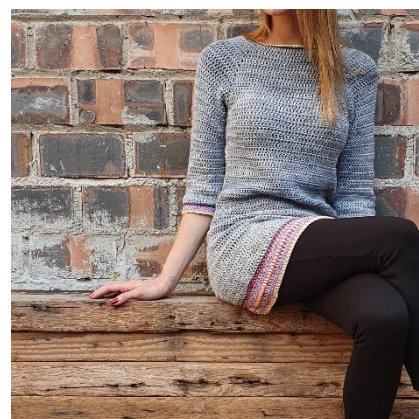
Round 5: Use Sweet Pea

Round 6: Use Pear.

NECK BAND

Round 1: Join Charcoal in the any st, ch1, work 1dc in each st around, close with a slst in the first dc turn and fasten off.

Round 2: Use Pear and rep prev round. Fasten off.



FINISH UP

Weave in all remaining ends. Block garment to measurement, cover with a damp cloth (or spray with water) and allow to dry.

ABOUT THE YARNS

Eco-Cotton is a softly spun yarn with 125 meters to a ball. It is 100% cotton and lovingly hand-dyed in South Africa.

Stockists of our yarn are listed on our webpage www.nurturingfibres.com

COPYRIGHT RESTRICTIONS

Digital & print publication rights reserved by Nurturing Fibres.

All other Intellectual property rights by Nurturing Fibres.

This pattern is for personal use only. Commercial use is strictly prohibited.